



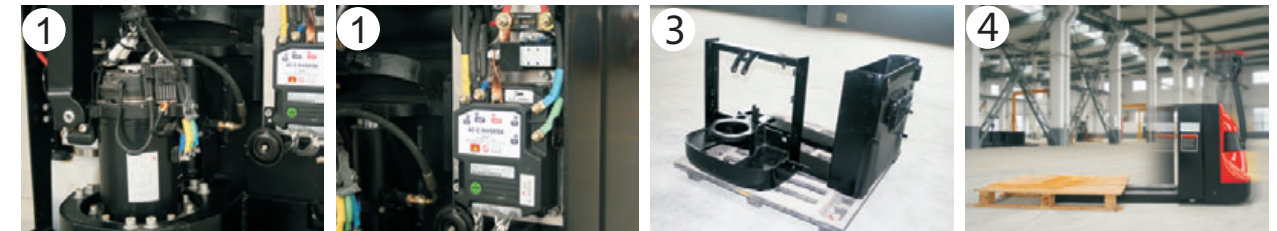
EPT20-20WA
Pedestrian Pallet Truck 2.0t

EP EQUIPMENT CO.,LTD.
www.ep-ep.com



Performance & Reliability

1. The innovative AC system offers quick response, accurate control, impact structure, excellent performance, longer battery service life.
2. Advanced regenerative braking guarantee low-energy consumption, increasing the efficiency.
3. High-strength frame design, suitable for tough workplaces, ensures longer service life.
4. Excellent performance of getting in and out of empty pallet, greatly increases the operation efficiency.



Safety

1. Unique arc board designed on the front frame ensures the clearance between front and rear frames stay constant, avoid the accident of clipping finger.
2. Anti-roll back prevents uncontrolled traveled travel speed or roll-back on ramps when loading and unloading.
3. Emergency plug mounted at up-right side on truck frame, all power can be cut off by simply pulling emergency plug and the truck stops



Serviceability

1. Self-Diagnostics provided through the digital display allows easy trouble-shooting with the use of an external hand-held analyzer.
2. Hinged battery steel cover can be easily opened, enhance efficient to supply distilled water or electrolyte.
3. Vertical motor ensures convenience inspection and maintenance of motor and brake, provide much better maintainability than horizontal motor.

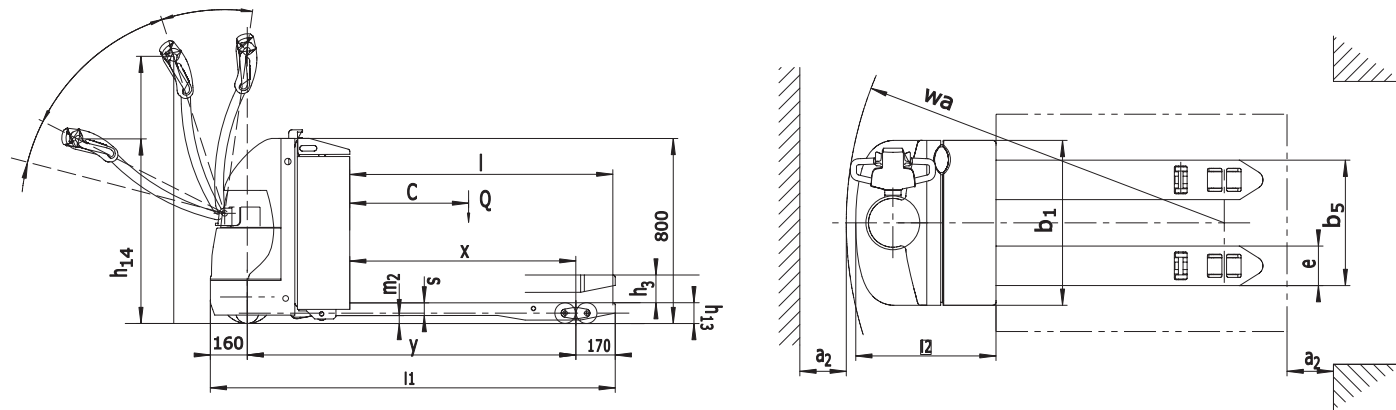


Operability

1. The ergonomically designed handle ensures smooth and easy controls of all operation. All the operation of lifting and travelling, will be easily achieved by touching the button switches in the handle.
2. More than 180° tiller/handle rotation range, plus compact body, ensure small turning radius and excellent maneuverability.
3. Creep speed control enabled when tiller/handle in vertical position allows the operator to work more efficient in a confined space.



EPT20-20WA			
	Standard Features		Option
1	Emergency stop & Belly Button	1	Load backrest
2	BDI and Hourmeter	2	Cold storage harness
3	Horn & Electrical Brake	3	Fork width and length option (size)
4	Casters to balance stability	4	Two pallets fork
5	Grease fitting	5	Entry & Exist roller for empty pallets
6	Industrial battery	6	Charger
7	Battery cable and plug	7	Build in charger
8	Progressive speed AC control system	8	Maintenance free battery
9	Creep option (as standard)	9	Customized battery compartment
10	Ergonomics handle	10	Swing out battery tray
11	Vertical-lifting battery change (as standard)	11	Special colour



Pedestrian Pallet Truck 2.0t Specification

Characteristics			
1.1	Manufacturer		EP
1.2	Model designation		EPT20-20WA
1.3	Drive unit		Battery
1.4	Operator type		Walkie
1.5	Load capacity	Q (kg)	2000
1.6	Load center	c (mm)	600
1.8	Load distance (Raised/ Lowered)	x (mm)	916/ 982 937/ 1003
1.9	Wheelbase	y (mm)	1418 1438
Weights			
2.1	Service weight (Incl. battery)	kg	535
2.2	Axle loading, laden operator/load side	kg	955/ 1580
2.3	Axle loading, unladen operator/load side	kg	430/ 105
Wheels, Chassis			
3.1	Tyre type		PU/ PU
3.2	Tyre size, operator side		Φ230x75
3.3	Tyre size, load side		2x Φ85x70/ Φ85x115
3.4	Balance wheels (dimensions)		Φ85x48
3.5	Wheels, number operator/load side (x=drive wheels)		1x +2/ 2 or 4
3.6	Tread, operator side	b ₁₀ (mm)	498
3.7	Tread, load side	b ₁₁ (mm)	370/ 515
Dimensions			
4.4	Lift height	h ₃ (mm)	120
4.9	Height of tiller arm in operating position, min/ max	h ₁₄ (mm)	825/ 1190
4.15	Fork height, lowered	h ₁₃ (mm)	85
4.19	Overall length	l ₁ (mm)	1748 1818
4.20	Length to face of forks	l ₂ (mm)	598
4.21	Overall width	b ₁ / b ₂ (mm)	710
4.22	Fork dimensions	s/ e/ l (mm)	55x170x1150 55x170x1220
4.25	Fork spread, min/ max	b ₅ (mm)	540/ 685
4.32	Ground clearance, center of wheelbase	m ₂ (mm)	35
4.33	Aisle width, 1000×1200 pallet crossways	Ast (mm)	1856
4.34	Aisle width, 800×1200 pallet lengthways	Ast (mm)	2056
4.35	Outer turning radius	Wa (mm)	1638 1659
Performance			
5.1	Travel speed, laden/ unladen	km/ h	5.5/ 6.0
5.2	Lifting speed, laden/ unladen	m/ s	0.051/ 0.060
5.3	Lowering speed, laden/ unladen	m/ s	0.052/ 0.059
5.8	Maximum gradeability, laden/ unladen S ₂ 5 min.	%	8/ 16
5.10	Service brake		Electromagnetic
Drive			
6.1	Drive motor rating S ₂ 60 min.	kW	1.1
6.2	Lift motor rating at S ₃ 15%	kW	0.84
6.4	Battery voltage/ rated capacity (5h)	V/ Ah	24/ 165
6.5	Battery weight	kg	160
	Battery compartment dimensions l/ w/ h	mm	650/ 540/ 200
	Battery type		Industry battery
Others			
8.1	Type of drive control		AC
	Manufacturer		ZAPI
8.4	Sound level at operator's ear	dB (A)	74

1. The specification in the table are for standard models only. For further information please contact us
2. Specification are subject to change without notice