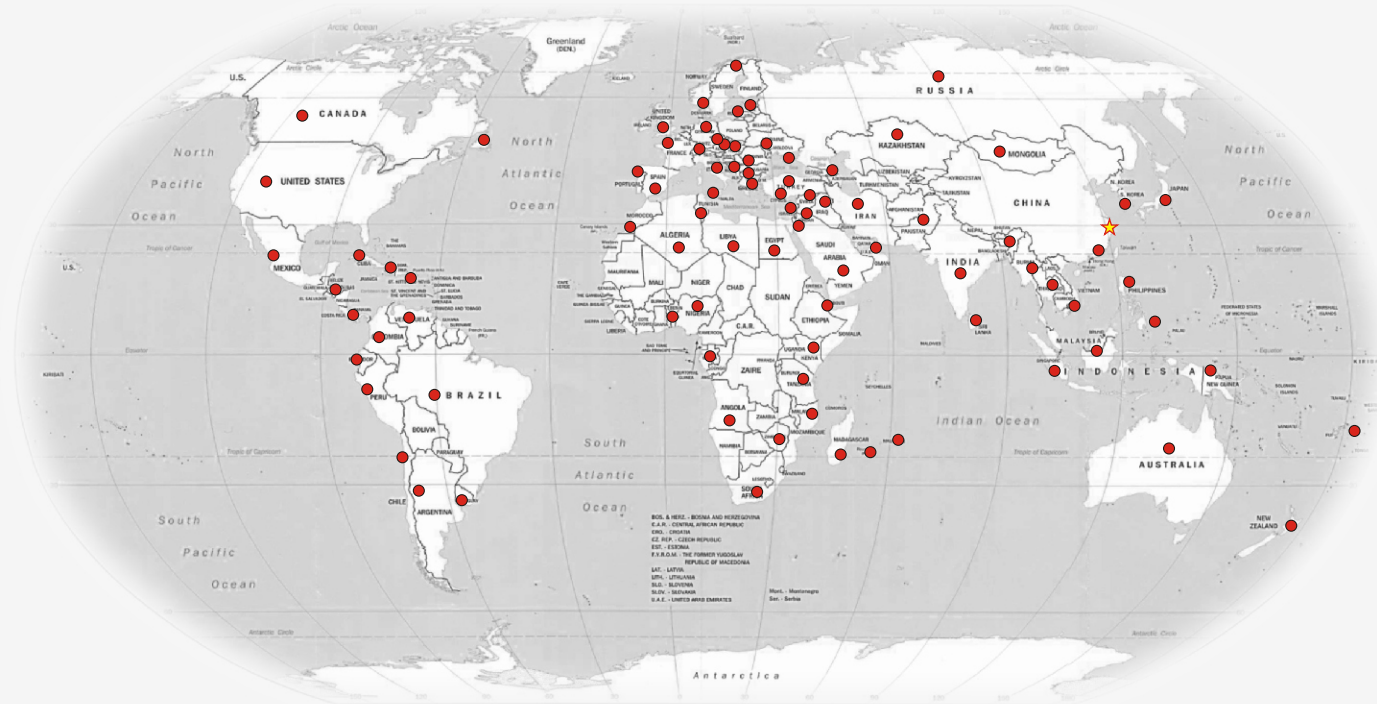


G

LOBAL SALES NETWORK



R Series

20.0/25.0t Diesel



CE CERTIFICATE



ISO 14001: 2004



ISO 9001: 2008

HANGCHA GROUP CO., LTD.
(Zhejiang Hangcha Imp.&Exp.Co.,Ltd.)

www.hcforklift.com

Add:398 Shi Qiao Road, Hangzhou Zhejiang province, China(310022)
Factory site:No.88,Donghuan Rd.,Economic Development Zone Lin'an,Zhejiang, China(311305)
Tel: +86-571-88926755
Fax: +86-571-88926789 88132890
E-mail: sales@hcforklift.com

HANGCHA GROUP CO., LTD. Reserves the right to make any changes without notice concerning colors, equipment, or specifications detailed in this brochure, or to discontinue individual models. The colors of trucks, delivered may differ slightly from those in brochures.

2012 VERSION 1/ COPYRIGHT 2011/09

HANGCHA GROUP CO., LTD.

- **Tilting cabin design, easy to service and maintenance to the truck**
- **Advanced ergonomic design, more comfortable to driver**
- **Wide view mast with lighting system, provides brand forward view ability, more safety**

The main components of 20-25t diesel trucks are international famous brands products, provide good performance, trucks' reliability and safety. This kind of trucks are widely applied in ports, railway terminal, and steel industries, etc..

Power System

Cummins turbo-charge QSC8.3 engine, meets the EPA 3 and EU III standard; high performance, low fuel consumption, low speed with high torque convertor. The truck is equipped with fin-type radiator, suction fan, decreasing air intake temperature, more reliability to cooling system.Specilized accessories are applied, to make sure the engine working condition and service. The double air filter system is an option.

Transmission system

Germany ZF 3-speed autoshift transmission, with most advanced micro-electronic TCU controlled clutch ratio valves, provides auto smooth shifting. It's easy to do service and maintenance with the fault display and diagnostic interface. Germany Kessler heavy duty drive axle, two-stage speed reduction, multi wet disc drive brake system, full closed and maintenance free, which is very suitable for heavy duty application.

Hydraulic system

The truck is applied American Parker combined hydraulic valves, main hydraulic pump. Hydraulic system with load sensor is to decrease the engine's continuous load. Remote hydraulic operation is also easy operation. And there're added another more hydraulic test points, which is easy for service and maintenance.

Mast

Two stages broad view mast, with enhanced mast torsional resistance capabilities. Double-stage lifting speed limitation hydraulic is more safety. And the fork positioner with sideshift is standard specification.

Brake system

American MICO hydraulic brake valve, wet disc driving brake and spring applied hydraulic released drum parking brake system, and the temperature monitored compelled hydraulic coolant system, all these improve the truck's safety.

Standard Specifications

- Hour meter
 - Wide view mast
 - Air conditioning with cooling and heating
 - Water thermometer
 - Hydraulic control valve (4 spools)
 - Tilting Cabin
 - Reverse beeper
 - Fuel meter
 - Plate-fin radiator
 - Tow coupling
 - Pneumatic tires
 - Sideshift with fork positioner
 - Torque convertor oil gauge
 - Front working lights
 - Full hydraulic steering
- Electronic horn
 - Key switch
 - Rear view mirror
 - Auto anti-tilting valve
 - Tool box
 - Speed odometer
 - Standard forks
 - Transmission oil temperature indicator
 - Battery charge indicator
 - Water seperator
 - Engine tachometer
 - Lowing speed limitation valve
 - Mechanical suspension seat
 - Air filter
 - Oil pressure warning
 - Pilot controlled type valve

Steering system

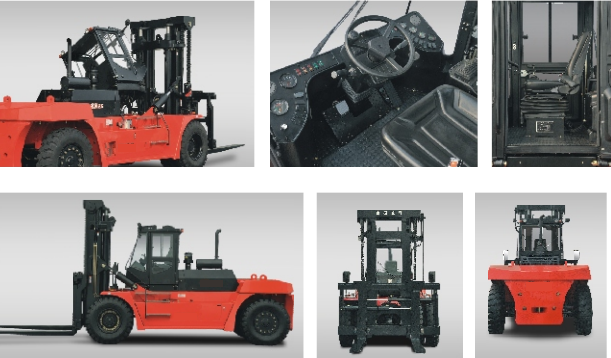
The steering axle is a casting with a transverse mounted double acting cylinder, full hydraulic steering, steering first, and load sensor steering function is also available, all these provide good steering performance.

Cabin

Full suspension cabin is applied, shock absorber and low noise.No frame connection in the corner and broad view front window provides better forward view ability. Adjustable steering column, with suspension seat, and the adjustable hydraulic lever component, all these are suitable to different body size drivers. The tilting cabin design make it easy do service. Heating and cooling air conditioning, inside and outside ventilation models, front and rear wipers, and with the demisting and defrosting functions, all provide a comfortable operation space to the driver.

Electronic system

Applied currently advanced international, Chinese and industry's standards, seat sensor system promote the driver's standard operation and safety. CAN-bus communication system, through monitor and fault display, make it realize to real time monitor the engine and clutch working condition, quick fault diagnostic and clean the fault. Applied American BASSMANN central power distribution box, is compact, and clear. Dash panel with full warning function display, make it easy for operation, and clear at a glance.



- Front lighting system
- Adjustable steering column
- Rear lighting system
- Seat sensor system
- Neutral switch
- Front wiper
- Pre-heating indicator
- Rear wiper

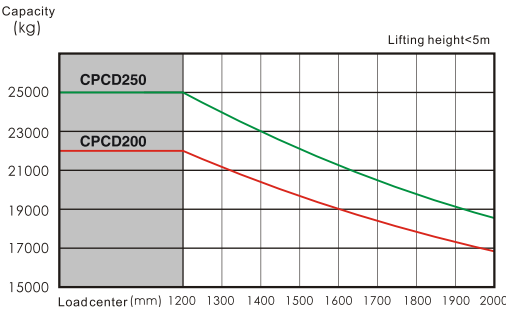
Options

- Customized color
- Rear video system
- Working lamp
- Warning lamp
- Other dimension forks
- Air pre-filter

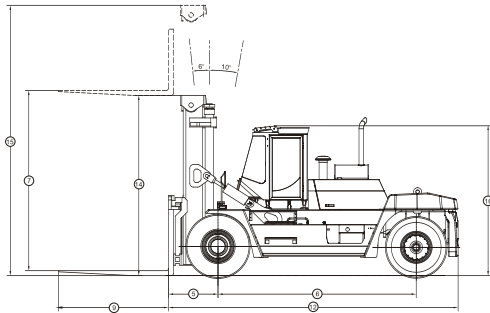
20-25t diesel forklift specification:

General	Manufacturer			HANGCHA GROUP CO.,LTD.				
	Basic model			CPCD200		CPCD250		
	1	Type			W36		W36	
	2	Power type			Diesel		Diesel	
	3	Rated Capacity			kg		20000	
	4	Load center			mm		1200	
Characteristics & Dimensions	5	Fork overhang(wheel center to fork face)			mm		1100	
	6	Wheelbase			mm		4400	
	7	Lift height			mm		4000	
	8	Free lift height			mm		110	
	9	Fork size	LxWxT	mm	2440X250X110		2440X250X110	
	10	Fork spread (outside) Min./Max.			mm		900/2600	
	11	Mast tilt range	F/R	deg	6/10		6/10	
	12	Overall dimensions	length to face of fork/overall length		mm		6450/8890	
	13		Overall width		mm		3050	
	14		Mast lowered height		mm		4000	
	15		Mast extended height		mm		6000	
16	Overhead guard height		mm		3380			
Performance	17	Ground clearance	Mast, without load		mm		300	
	18		Wheelbase center,without load		mm		450	
	19	Min.turning radius			mm		6000	
	20	Lifting speed	with/without load	mm/sec	330/300		330/300	
	21	Forward travel speed	Without load, Max.		Km/h		28	
	22		With load, Max.		Km/h		25	
	23	Max.gradeability (Full load)			%		25	
	24	Max. Drawbar Pull (Full load)			KN		160	
Weight	25	Service weight		kg	335000 33500		355000 35500	
Wheel	26	Tyres	Front		14.00-24-24PR		14.00-24-28PR	
	27		Rear		14.00-24-24PR		14.00-24-28PR	
	28		No.of Tyres, front/rear		4/2		4/2	
	29	Tread	Front		mm		2200	
	30		Rear		mm		2300	
Brake	31	Service brake			Wet disc brake			
	32	Parking brake			spring applied, hydraulic release multi-disc brake			
Power & transmission	33	Battery	Voltage/Capacity		V/Ah	2x12/150		2x12/150
	34	Engine	Model		CUMMINS/QSC8.3		CUMMINS/QSC8.3	
	35		Rated output/r.p.m.		kw/rpm	179/2200		179/2200
	36		Rated torque/r.p.m.		N·m/rpm	1085/1500		1085/1500
	37		No. of cylinder-Bore x stroke		6-114X135		6-114X135	
	38		Displacement		L	8.3		8.3

LOAD CHART



DIMENSIONS



20-25t diesel forklift mast specification:

Type	Max. fork height (mm)		Overall Height				Tilt range	
			Lowered (mm)		Extended (mm)		FWD/RWD (deg)	
Wide view mast	20t	25t	20t	25t	20t	25t	20t	25t
	3300	3300	3650	3650	5290	5290	6/10	6/10
	3600	3600	3800	3800	5590	5590	6/10	6/10
	4000	4000	4000	4000	5990	5990	6/10	6/10
	4300	4300	4150	4150	6290	6290	6/10	6/10
	4500	4500	4250	4250	6490	6490	6/10	6/10
	4800	4800	4400	4400	6790	6790	6/10	6/10
	5000	5000	4550	4550	7040	7040	6/10	6/10
	5500	5500	4800	4800	7540	7540	3/6	3/6
	6000	6000	5100	5100	8090	8090	3/6	3/6
	6500	6500	5350	5350	8590	8590	3/6	3/6

