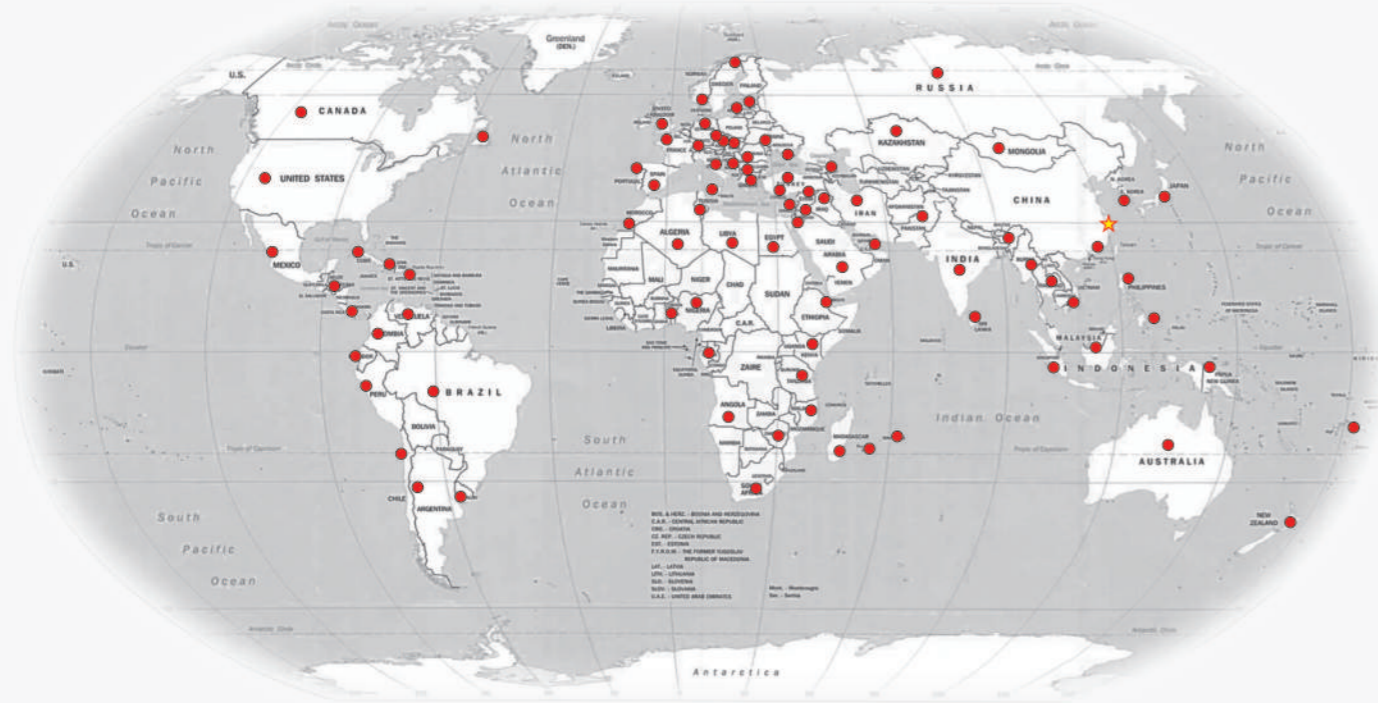


**G**LOBAL SALES NETWORK

# XF Series



4.0-5.5t  
Diesel / Gasoline / LPG



CE CERTIFICATE



ISO14001: 2004



ISO9001: 2008

**HANGCHA GROUP CO., LTD.**  
(Zhejiang Hangcha Imp. & Exp.Co.,Ltd.)

[www.hcforlift.com](http://www.hcforlift.com)

Add:398 Shi Qiao Road, Hangzhou Zhejiang province, China(310022)  
Factory site:No.88,Donghuan Rd., Economic Development Zone Lin'an, Zhejiang, China(311305)  
Tel: +86-571-88926755  
Fax: +86-571-88926789 88132890  
E-mail: [sales@hcforlift.com](mailto:sales@hcforlift.com)

HANGCHA GROUP CO., LTD. Reserves the right to make any changes without notice concerning colors, equipment or specifications detailed in this brochure, or to discontinue individual models. The colors of trucks, delivered may differ slightly from those in brochures.

2014 VERSION 1/COPYRIGHT 2014/12

**HANGCHA GROUP CO., LTD.**



### Comfortable operation

- 1 The extra foot space is provided to reduce operator fatigue significantly. The new wide-open, non-slip step makes getting in and out easy and safe.

The optional Electro-hydraulic proportional control system contributes more sensitive and precise load handling. The easy-to-operate levers provide total load handling operation. An armrest is provided to reduce fatigue.

- 2 In addition to the soft landing system, the soft lifting system is adopted (front lifting cylinders of triplex mast and full free duplex mast), as a result, the noise and shock of the mast significantly decreases.

- 3 The developed front lifting cylinders with smaller outer diameter give the operator superior forward visibility.

The double front lifting cylinders provide better forward visibility.

### Reliability

By focusing on enhancing reliability, reducing downtime, the XF series is able to make the greater productivity for customer.

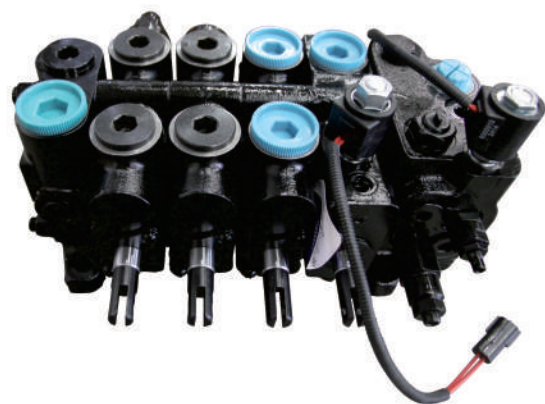
XF series truck just equip with Okamura transmission. Brake drum and hub adopt monolithic construction.

XF series features rugged design, stamped frame and engine hood, stamped instrument panel and head guard, heavy profile rail mast combine to provide excellent rigidity, which ensures outstanding reliability even in heavy-duty work.

- 4 Extra capacity combined radiator with serpentine wave and optimized heat dissipation channel enhance the heat dissipation capability to keep engine reliability even in heavy-duty applications.

- 5 Bigger diameter of steering cylinder





### Productivity

Dynamic load sensing hydraulic steering system, Efficiency lighting system, lower fuel consumption, combine to provide increased productivity and reduced operating costs.

The new Dynamic load sensing hydraulic steering system contributes to reduce loss of hydraulic and improve energy efficiency.

The new efficiency lighting system employs LED illuminant and new type reflector to reduce energy consumption, improve significantly illumination performance and prolong work time.



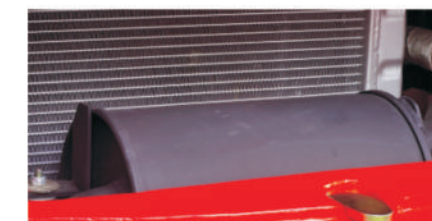
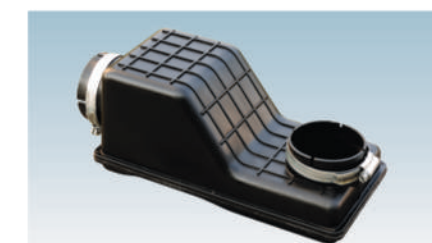
### Comfortable operation

In developing the new XF Series, comfort and ease of operation is carefully considered, for example, to improve vibration levels, compound engine damper and full floating power train are adopted.

Comfortable operating environments for operator also contribute to increased productivity.

In addition to rubber damper between frames and steering axle, compound engine damper and full floating power train achieve flexible connection between frames and driving system, as a result, traveling vibrations and vibrations from the driving system are significantly reduced.

The enlarged capacity of optimized exhaust muffler, the intake muffler and the noise shield technologies provide significantly lower noise levels.

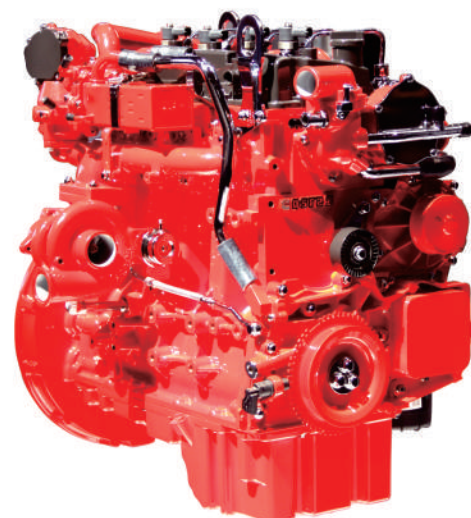


### Environmental Friendliness

A lineup of powerful and clean engines and environment friendly materials help to reduce the output of undesirable substances over the lifetime of the truck, while creating a cleaner work environment.

Each model employs a specially developed engine for the optimum balance of power and superior environmental performance. CUMMINS engine QSF2.8T4F is in compliance with EU stage-IIIB control regulation.

The exhaust treatment DOC ensure the exhaust satisfy with Europe 3B and USA T4F, it also with good noise reduction, maintenance is minimal.



- 1 The new, relocated easy-to-see LCD meter lets the operator check on all aspects of operational status at a glance.
- 2 The new automobile-style light/turn-signal lever and forward-reverse lever are ergonomically designed and arranged to improve comfort and productivity.
- 3 The small diameter steering wheel with tilt adjustment provides the ideal operating position. The superior responsiveness of the steering wheel optimizes maneuverability even in narrow spaces.
- 4 The parking brake is specially developed. The operational force is reduced by 30%.
- 5 The automobile-style suspended pedals provide more ergonomic operation.



The new vehicle controller integrates all electrical components, features excellent durability for temperature, water and vibration for most demanding operation.



CUMMINS engine use the special air filter, it can reduce air intake resistance dramatically, equipped with pressure alarm to master the maintaining time.



## Easy maintenance

Careful design facilitates inspection and servicing. Easy maintenance reduces the amount of downtime and helps to reduce cost also.

The cover on the Panel can be lifted up simply to check the brake fluid.

The easy-to-operate latch provides quick access to the engine compartment.

The two-piece design makes the floorboard easy to lift and remove for access to the power train.

The fasteners of the radiator cover can be turned easily by hand to enable quick inspections or servicing.



## Standards

Transmission	Steering	Chassis	Control	Hydraulic
Suspension transmission Oil filter Dipstick Oil cooler Non-asbestos brake	Full hydraulic power steering Smaller diameter steering wheel Adjuster of steering wheel	Anti-slip pedal Rubber pedal Engine hood spring	Power steering Suspension pedal Integrated combination switch Cable parking brake	Dynamic load sending control valve ( Diesel IC ) Hydraulic oil filter Tilt cylinder self-lock valve Hydraulic oil dipstick Dual pump
Truck	Electronics		Mast	
Traction device Hand grip Standard seat Standard overhead guard Waterproof cover on the guard Back view mirror Pneumatic tyres Toolbox Counterweight net Fan protector	Big capacity aluminum radiator Whirlwind air cleaner Safety filter High-efficient intake muffler High-efficient exhaust muff Upright exhaust pipe	High-efficient front lights High-efficient LED rear lights Maintenance-free battery Combination controller LCD display Neutral switch Hour meter Fuel gauge Water temperature gauge Pre-heat indicator Charging indicator Oil pressure warning Transmission oil pressure warning Horn Reversing buzzer	Standard wide view duplex mast Standard forks Standard fork carriage Standard load backrest Mast speed limiting valve Loading relieve valve Soft landing system Soft lifting system Side roller	

## Options

Truck	Transmission	Power	Hydraulic	Electronics	Mast
Cabin Cabin heater Front window Super elastic tyre Non-mark tyre(white/green) Suspension seat Extinguisher Cover of tilt cylinder Heightening overhead guard Reversing assist grip Customer painting OPS(Operator Presence Sensing system) Boot for tilt cylinder Additional counter weight	Dual driving tyre Solid tyre Japanese drum brake	Dual fuel LPG system Big capacity copper radiator Upright exhaust system Middle-positioned exhaust system Dual air filter Net cover of radiator Sparkle arrester Purified exhaust system Swivel LPG bottle support Downward LPG bottle support	Auxiliary hydraulic valve Electro-hydraulic proportional control system Return oil filter	OBD Front working light Rear working light Warning lamp Speed meter Over-speed alarm LED working light	Duplex wide view free-lift mast Triplex wide view free-lift mast Triplex wide view 4-cylinder free-lift mast Special forks Wider fork carriage Wider load back rest

## Safety

A wide range of technologies are applied to ensure absolute safety for both the operator and those in the surrounding.

An optional rear-pillar assist grip with a horn button enhances safety of operator while traveling in reverse.

The locking device of the engine hood damper and parking brake help add to safety.



- 1 The operator presence sensing system incorporates lifting/tilting and traveling locking function. When the operator leaves the seat, the system automatically locks lifting / tilting and disables traveling to ensure safety.
- 2 A throttling device is adopted to avoid the mast being out of control even some pipes are broken.



## Optional attachments

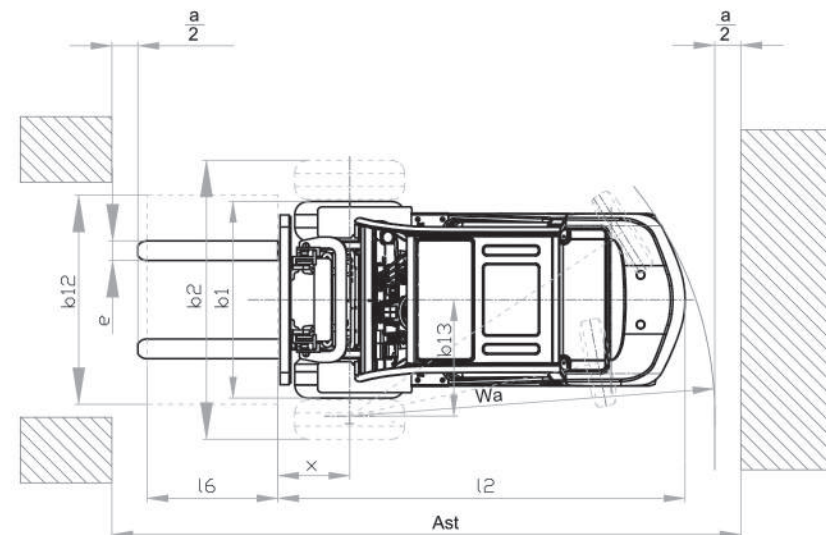
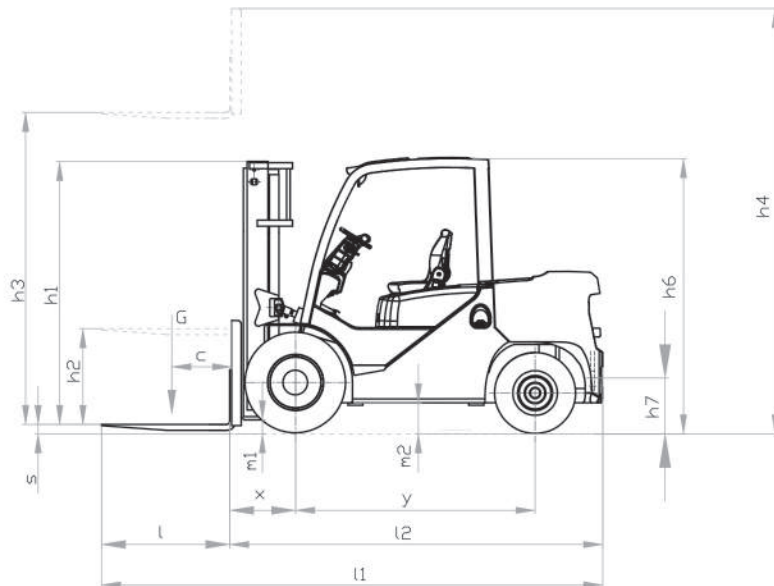
Paper roll clamp Rotating bale clamp Load stabilizer Multi-drum clamp Bale clamp Drum clamp Dumping clamp Crane arm String Pole	Sideshifter Rotating forks Fork extensioner Load release device Carton clamp Push-pull device Bucket Hook Lengthened fork
---	---



**XF series 4.0-5.5t forklift specification:**

		HANGCHA GROUP CO.,LTD.																	
Distinguishing mark	1.1	Manufacturer (abbreviation)																	
	1.2	Manufacturer's type designation	CPCD40-XW35B	CPCD45-XW35B	CPCD50-XXW35B	CPCD55-XXW35B	CPCD40-XW58B	CPCD45-XW58B	CPCD50-XXW58B	CPCD55-XXW58B	CPQYD40-XW57B CPYD40-XW57B	CPQYD45-XW57B CPYD45-XW57B	CPQYD50-XXW57B CPYD50-XXW57B	CPQYD55-XXW57B CPYD55-XXW57B					
Distinguishing mark	1.3	Drive: electric (battery or mains), diesel, petrol, fuel gas	Diesel																
	1.5	Rated capacity/rated load	Q (kg)	4000(3500)	4500(4000)	5000(4500)	5500(5000)	4000(3500)	4500(4000)	5000(4500)	5500(5000)	4000(3500)	4500(4000)	5000(4500)	5500(5000)				
	1.6	Load centre distance	c (mm)	500(600)															
	1.8	Load distance, centre of drive axle to fork	x (mm)	550				550				550				550			
	1.9	Wheelbase	y (mm)	2000				2150				2000				2150			
Weight	2.1	Service Weight	kg	6500	6700	6850	7250	6500	6700	6850	7250	6500	6700	6850	7250				
	2.2	Axle loading, laden front/rear	kg	9825/1175	9825/1375	10325/1525	3300/3950	9825/1175	9825/1375	10325/1525	3300/3950	9825/1175	9825/1375	10325/1525	3300/3950				
	2.3	Axle loading, unladen front/rear	kg	3020/3480	3020/3680	3020/3830	11000/1750	3020/3480	3020/3680	3020/3830	11000/1750	3020/3480	3020/3680	3020/3830	11000/1750				
Tyres, chassis	3.2	Tyre size, front		8.25-15-14PR				300-15-18PR				8.25-15-14PR				300-15-18PR			
	3.3	Tyre size, rear		7.00-12-12PR															
	3.6	Tread, front	b <sub>10</sub> (mm)	1173	1203				1173	1203				1173	1203				
Dimensions	3.7	Tread, rear	b <sub>11</sub> (mm)	1130															
	4.1	Tilt of mast/fork carriage forward/backward	α/β(°)	6/12															
	4.2	Height, mast lowered	h <sub>1</sub> (mm)	2245				2395				2245				2395			
	4.3	Free lift	h <sub>2</sub> (mm)	160		160		170		160		160		170		160		170	
	4.4	Lift	h <sub>3</sub> (mm)	3000															
	4.5	Height, mast extended	h <sub>4</sub> (mm)	4170				4320				4170				4320			
	4.7	Height of overhead guard	h <sub>6</sub> (mm)	2270															
	4.20	Length to face of forks	l <sub>2</sub> (mm)	3085	3115	3260	3330	3085	3115	3260	3330	3085	3115	3260	3330	3085	3115	3260	3330
	4.21	Overall width, Std/Dual wheel	b <sub>1</sub> /b <sub>2</sub> (mm)	1420/1940	1503/1940				1420/1940	1503/1940				1420/1940	1503/1940				
	4.22	Fork dimensions ISO 2331	s/e/l (mm)	50x122x1070	50x50x1070	50x150x1070	60x150x1200	50x122x1070	50x150x1070	50x150x1070	60x150x1200	50x122x1070	50x150x1070	50x150x1070	60x150x1200	50x122x1070	50x150x1070	50x150x1070	60x150x1200
	4.31	Ground clearance, laden, below mast	m <sub>1</sub> (mm)	170															
	4.32	Ground clearance, centre of wheelbase	m <sub>2</sub> (mm)	230															
	4.34	Aisle width predetermined load dimensions	Ast(mm)	4240	4270	4430	4490	4240	4270	4430	4490	4240	4270	4430	4490	4240	4270	4430	4490
	4.35	Turning radius	W <sub>a</sub> (mm)	2690	2720	2875	2905	2690	2720	2875	2905	2690	2720	2875	2905	2690	2720	2875	2905
4.36	Internal turning radius	b <sub>13</sub> (mm)	890				920				890				920				
Performance data	5.1	Travel speed, laden/unladen	km/h	-/24															
	5.2	Lift speed, laden/unladen	m/s	0.460/-				0.400/-				0.460/-				0.400/-			
	5.3	Lowering speed, laden/unladen	m/s	0.500/-				0.500/-				0.500/-				0.500/-			
	5.5	Drawbar pull, laden/unladen	N	38000/-															
5.7	Gradeability, laden/unladen*	%	33/-	31/-	29/-	27/-	35/-	33/-	31/-	28/-	33/-	31/-	29/-	27/-					
Combustion-engine	7.1	Engine manufacturer/type		PERKINS 1104D-44				QSF2.8T4F				GM4.3L							
	7.2	Engine power according to DIN ISO 1585	kW	55.9				55				74							
	7.3	Rated speed	r/min	2200				2200				2300							
	7.3.1	Torque at 1/min	Nm/r/min	265/1700				298/1600				301/1600							
	7.4	Number of cylinders/displacement	(- ) / ( cm <sup>3</sup> )	4/4410				4/2800				6/4294							
	7.10	Battery voltage/nominal capacity	V/Ah	2x12/90				12/80				12/60							
Addition data	10.1	Operating pressure for attachments	bar	190															
	10.4	Fuel tank capacity	liter	80				90				80				90			

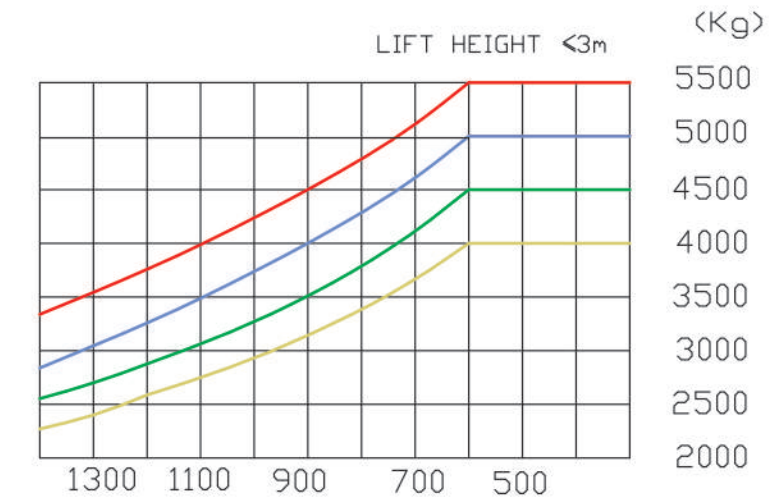
**DIMENSIONS**



$A_{st} = W_a + x + l_6 + a; a = 200$

applies only if  $\frac{b_{12}}{2} < b_{13}$

**LOAD CHART**



### 4.0-4.5t XF series mast:(pneumatic)

Type	Model	max. fork height mm	Overall height			Free lift		Tilt range		Capacity				
			Lowered mm	Extended		Without backrest mm	With backrest mm	Front Overhang mm	FWD (°)	BWD (°)	load capacity at 500mm		Dual tire	
				Without backrest mm	With backrest mm						4.0t kg	4.5t kg	4.0t kg	4.5t kg
Wide view mast	X45M250	2500	1995	3330	3670	160	160	550	6	12	4000	4500	4000	4500
	X45M270	2700	2095	3530	3870	160	160	550	6	12	4000	4500	4000	4500
	X45M300	3000	2245	3830	4170	160	160	550	6	12	4000	4500	4000	4500
	X45M330	3300	2395	4130	4470	160	160	550	6	12	4000	4500	4000	4500
	X45M350	3500	2495	4330	4670	160	160	550	6	12	4000	4500	4000	4500
	X45M360	3600	2545	4430	4770	160	160	550	6	12	4000	4500	4000	4500
	X45M370	3700	2595	4530	4870	160	160	550	6	12	3850	4350	4000	4500
	X45M400	4000	2795	4830	5170	160	160	550	6	12	3800	4250	4000	4500
	X45M430	4300	2960	5130	5470	160	160	550	6	6	3600	4000	3800	4250
	X45M450	4500	3070	5330	5670	160	160	550	6	6	3400	3800	3600	4050
Wide view full free duplex mast	X45M480	4800	3235	5630	5970	160	160	550	6	6	3000	3350	3200	3600
	X45M500	5000	3345	5830	6170	160	160	550	6	6	2800	3150	3000	3400
	X45U250	2500	1976	3365	3670	1114	810	557	6	12	4000	4500	4000	4500
	X45U275	2750	2100	3615	3920	1238	935	557	6	12	4000	4500	4000	4500
	X45U300	3000	2226	3865	4170	1365	1055	557	6	12	4000	4500	4000	4500
	X45U330	3300	2376	4165	4470	1515	1205	557	6	12	4000	4500	4000	4500
	X45U350	3500	2476	4365	4670	1615	1310	557	6	12	4000	4500	4000	4500
	X45U360	3600	2526	4465	4770	1665	1360	557	6	12	4000	4500	4000	4500
	X45U370	3700	2576	4565	4870	1715	1410	557	6	12	3850	4350	4000	4500
	X45N400	4000	2080	4850	5170	1230	910	603	6	6	3600	4000	4000	4500
Wide view full free triplex mast	X45N430	4300	2180	5155	5470	1330	1010	603	6	6	3400	3800	3600	4050
	X45N450	4500	2248	5365	5685	1395	1080	603	6	6	3200	3600	3400	3850
	X45N470	4700	2310	5550	5870	1460	1140	603	6	6	3000	3350	3200	3600
	X45N480	4800	2340	5650	5970	1490	1170	603	6	6	3000	3350	3200	3600
	X45N500	5000	2410	5855	6170	1560	1240	603	6	6	2800	3150	3000	3400
	X45N550	5500	2575	6355	6670	1725	1410	603	3	6	2250	2550	2800	3100
	X45N600	6000	2790	6865	7180	1940	1620	603	3	6	1700	1950	2600	2800
	X45N650	6500	2980	7365	7680	2130	1810	603	3	6	/	/	2400	2500
	X45N700	7000	3155	7860	8175	2305	1990	603	3	6	/	/	2000	2200

With sideshifter minus 200kg,with integral sideshifter minus 100kg.

### 5.0t XF series mast:(pneumatic)

type	model	max. fork height mm	Overall height		Free lift		Tilt range		Capacity					
			Lowered mm	Extended		Without backrest mm	With backrest mm	Front Overhang mm	FWD (°)	BWD (°)	load capacity at 500mm			
				Without backrest mm	With backrest mm						Single tire kg	Dual tire kg		
Wide view mast	XX50M250	2500	1995	3330	3865	160	160	550	6	12	5000	5000	5000	
	XX50M270	2700	2095	3530	4065	160	160	550	6	12	5000	5000	5000	
	XX50M300	3000	2245	3830	4365	160	160	550	6	12	5000	5000	5000	
	XX50M330	3300	2395	4130	4665	160	160	550	6	12	5000	5000	5000	
	XX50M350	3500	2495	4330	4865	160	160	550	6	12	5000	5000	5000	
	XX50M360	3600	2545	4430	4965	160	160	550	6	12	5000	5000	5000	
	XX50M370	3700	2595	4530	5065	160	160	550	6	12	4800	5000	5000	
	XX50M400	4000	2795	4830	5365	160	160	550	6	12	4750	5000	5000	
	XX50M430	4300	2960	5130	5665	160	160	550	6	6	4500	4750	4750	
	XX50M450	4500	3070	5330	5865	160	160	550	6	6	4250	4500	4500	
Wide view full free duplex mast	XX50M480	4800	3235	5630	6165	160	160	550	6	6	3750	4000	4000	
	XX50M500	5000	3345	5830	6365	160	160	550	6	6	3500	3750	3750	
	XX50U250	2500	1976	3365	3865	1115	610	557	6	12	5000	5000	5000	
	XX50U275	2750	2100	3615	4115	1240	735	557	6	12	5000	5000	5000	
	XX50U300	3000	2226	3865	4365	1365	860	557	6	12	5000	5000	5000	
	XX50U330	3300	2376	4165	4665	1515	1010	557	6	12	5000	5000	5000	
	XX50U350	3500	2476	4365	4865	1615	1110	557	6	12	5000	5000	5000	
	XX50U360	3600	2526	4465	4965	1665	1160	557	6	12	5000	5000	5000	
	XX50U370	3700	2576	4565	5065	1715	1210	557	6	12	4800	5000	5000	
	XX50N400	4000	2080	4860	5365	1220	715	610	6	6	4500	5000	5000	
Wide view full free triplex mast	XX50N430	4300	2180	5160	5665	1320	815	610	6	6	4250	4500	4500	
	XX50N450	4500	2248	5370	5880	1390	885	610	6	6	4000	4250	4250	
	XX50N470	4700	2310	5560	6070	1450	945	610	6	6	3750	4000	4000	
	XX50N480	4800	2340	5660	6170	1480	975	610	6	6	3750	4000	4000	
	XX50N500	5000	2410	5860	6370	1550	1045	610	6	6	3500	3750	3750	
	XX50N550	5500	2575	6360	6870	1720	1210	610	3	6	2850	3350	3350	
	XX50N600	6000	2790	6870	7380	1930	1425	610	3	6	2200	2950	2950	
	XX50N650	6500	2980	7370	7880	2125	1615	610	3	6	/	/	2650	2650
	XX50N700	7000	3155	7865	8375	2300	1790	610	3	6	/	/	2350	2350

With sideshifter minus 200kg,with integral sideshifter minus 100kg.